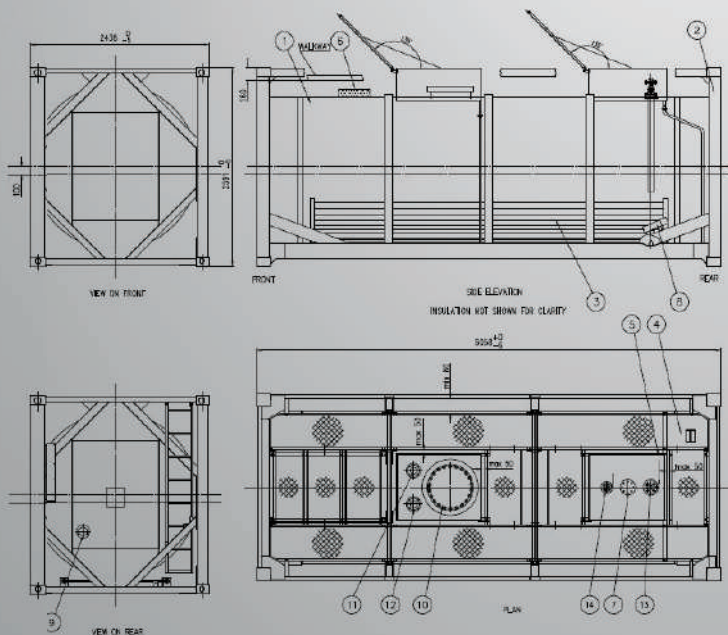


THE EUROTAINER T22 TYPE

14500 and 17500 LITRE TANK CONTAINERS

For Transport and Storage of Hazardous Liquid Products



- ✓ ASME "U" Stamp design code
- ✓ Built to U.S 49 CFR 172 Special Provisions TP38 and TP44
- ✓ Rated for lethal service (ASME section VIII) ✓
- Rated for Poison by Inhalation (PIH) and Toxic by Inhalation (TIH) service
- ✓ Fire-safe valves (as per American Petroleum Institute requirements)
- ✓ Full frame design
- ✓ Insulated and fitted with heating coils
- ✓ Global availability
- ✓ 316L stainless steel barrel
- ✓ Bolted manway closures
- ✓ Multiple specification options

THE EUROTAINER T22 TYPE, 14500 LITRE AND 17500 LITRE TANK CONTAINERS

STANDARD SPECIFICATIONS*

Capacity	14500 litre / 3830 U.S. gallon 17500 litre / 4623 U.S. gallon	Ladder	Fitted to the end of the tank
T Code	T22	Top Discharge	50 mm/2 inch diameter fire safe ball valve, flanged. Siphon tube installed.
Length	20 feet (6.058 meters)	Bottom Discharge	None
Width	8 feet (2.438 meters)	Filling port/Spare connection	80 mm / 3 inch, flanged
Height	8 feet, 6 inch (2.591 meters)	Man way	500 mm / 20 inch diameter, bolted closures (22)
Maximum Gross Weight	36000 kg (79366 lbs)	Air Line	25 mm / 1 inch stainless steel ball valve, BSP connection with cap.
Tare Weight	14500L: 5030 kg (11089 lbs) 17500L: 5480 kg (12081 lbs)	Spill boxes	Fitted with lids and stainless steel drain tubes
Working Pressure	6.67 bar/ 97 psi	Safety Devices	80 mm/ 3 inch diameter device set at 7.34 bar/ 106 psi. Flame trap, rupture disc and pressure gauge fitted. Provision for secondary relief device.
Test Pressure	10 bar/ 145 psi	Walkway	Full coverage, marine grade aluminum
Design Temp	-40C/-40F to 130C/266F	Insulation	105 mm, as per TP38. 304 grade stainless steel cladding.
Barrel thickness and construction	10 mm equivalent reference steel thickness construction, 316L stainless steel. Built to TP44 – 49 CFR requirements.	Heating/Cooling	Coils with 10 square meters of effective heating surface area (5 square meters actual surface). 6 bar working pressure.
Design Code	ASME sect. VIII, div. 1 – Stamp U	Thermometer	Surface sensor gauge fitted, reading -20C/-4 F to 160C/320F
Frame Type	Full	Gaskets	Gylon type fitted. Can be changed to meet chemical grade requirements or customer specification.
Earth connection/grounding	One (1) stainless steel lug on rear of tank frame	Document holder	One (1) water resistant PVC document tube

* All specification details are based on the average T22 type, 14500 and 17500 litre capacity tank in the Eurotainer fleet. Specifications may vary based on a selected tank container. For more specific details please contact your local Eurotainer office. Our full office list can be found on our website at www.eurotainer.com

APPROVALS:

All global approvals for international transport as UN Portable tank including CSC, ACEP, IMDG, RID/ADR, US DOT/CFR 49, UIC, Transport Canada and others.

SPECIFICATION OPTIONS:

Baffles, electric heating, refrigeration, collapsible handrails, linings, level gauges, product specific valves, GPS tracking and telemetry systems, additional insulation, lined/coated valves, ground level operated air, nitrogen or CO2 lines, cleaning-in-place system, additional heating/cooling coils, various valve connections and fittings, etc. **Also available in other capacities up to 24000 litres and in T20, non U Stamp design.**

GO TO WWW.EUROTAINER.COM TO WATCH 3D/CAD VIDEOS OF OUR TANK CONTAINERS



Part of
STREAM